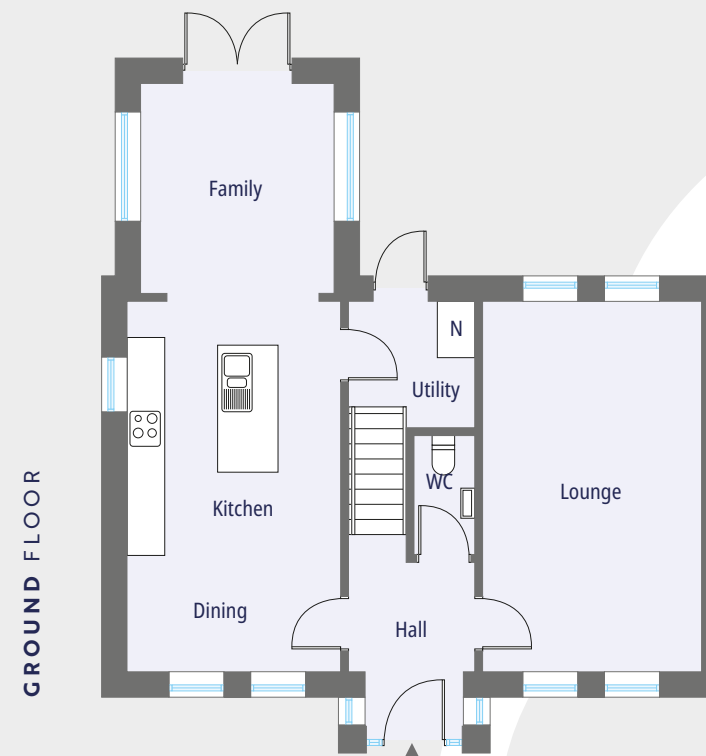




# The Beaufort (D18)

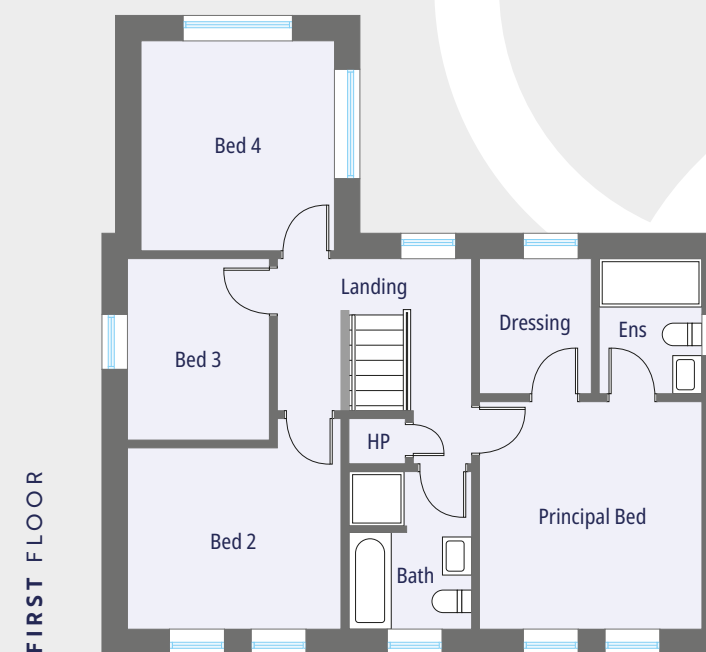
4 Bedroom Detached Home

Floor area: c. 1537 sq ft




## GROUND FLOOR

|                       |               |
|-----------------------|---------------|
| Entrance Hall with WC |               |
| Lounge                |               |
| ft                    | 20'3" x 11'8" |
| m                     | 6.18 x 3.58   |
| Kitchen   Dining      |               |
| ft                    | 20'3" x 11'9" |
| m                     | 6.18 x 3.62   |
| Family                |               |
| ft                    | 11'9" x 10'7" |
| m                     | 3.60 x 3.25   |
| Utility (max)         |               |
| ft                    | 7'2" x 6'9"   |
| m                     | 2.17 x 2.09   |



## FIRST FLOOR

|                         |               |
|-------------------------|---------------|
| Principal Bedroom (max) |               |
| ft                      | 12'5" x 11'8" |
| m                       | 3.79 x 3.59   |
| Ensuite                 |               |
| ft                      | 7'5" x 5'6"   |
| m                       | 2.26 x 1.70   |
| Dressing                |               |
| ft                      | 7'4" x 5'9"   |
| m                       | 2.26 x 1.75   |
| Bedroom 2 (max)         |               |
| ft                      | 11'9" x 11'7" |
| m                       | 3.62 x 3.56   |
| Bedroom 3               |               |
| ft                      | 9'10" x 7'9"  |
| m                       | 3.02 x 2.38   |
| Bedroom 4 (max)         |               |
| ft                      | 11'4" x 10'7" |
| m                       | 3.47 x 3.25   |
| Bathroom                |               |
| ft                      | 8'9" x 6'9"   |
| m                       | 2.70 x 2.09   |

 = Nilan Unit

**Note:** Selected sites may have a handed or rendered version. Check with our selling agents to confirm the orientation and brick/render make up of specific sites.

CGI shown for illustration purposes only. Floor plans are not to scale