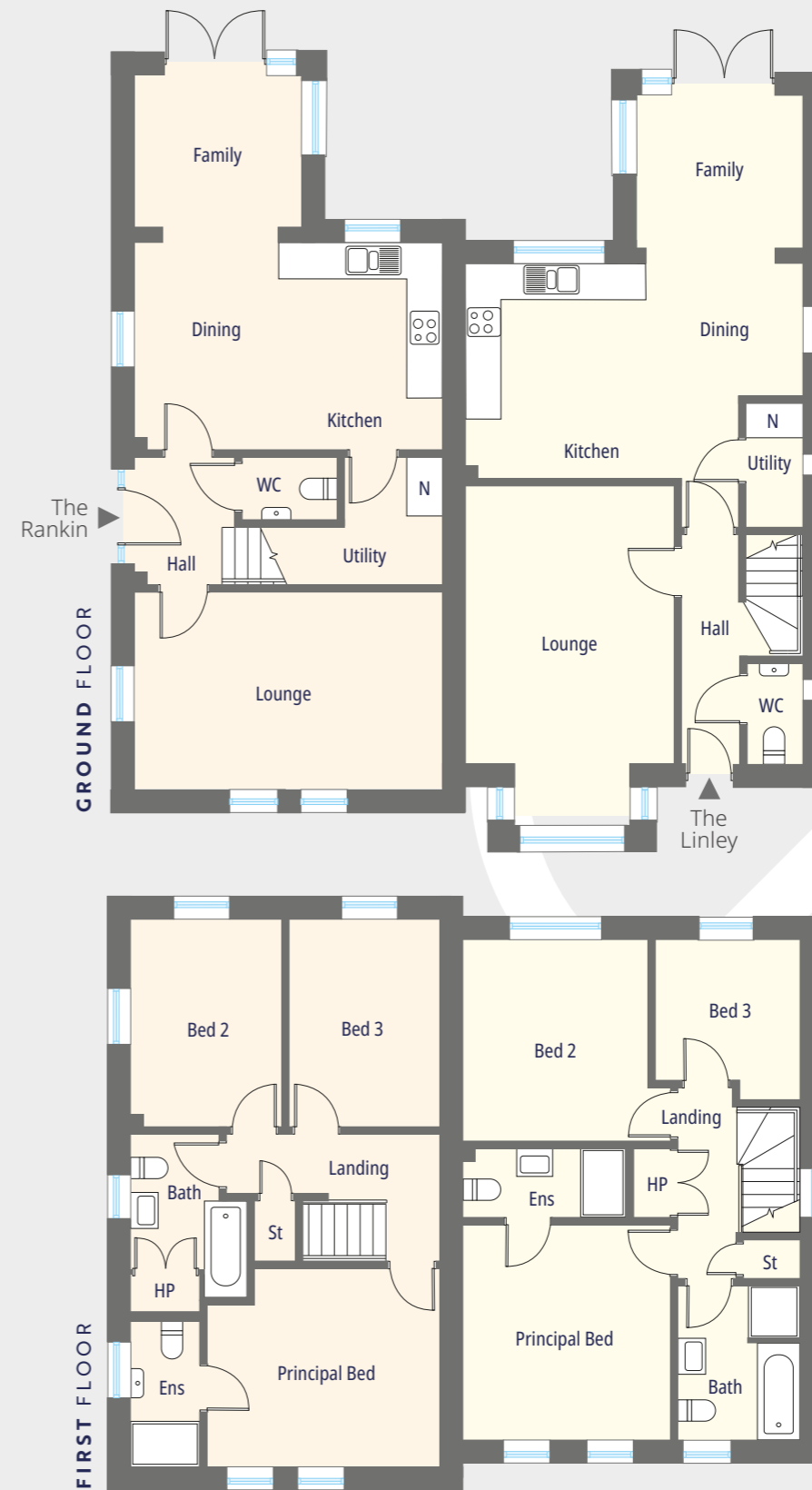




## The Rankin (D12) & The Linley (D11)

The Rankin:  
3 Bedroom Semi Detached Home  
Floor area: c. 1205 sq ft

The Linley:  
3 Bedroom Semi Detached Home  
Floor area: c. 1230 sq ft



### The Rankin

#### GROUND FLOOR

Entrance Hall with WC	
Lounge	
ft 17'6" x 11'4"	m 5.35 x 3.46
Kitchen   Dining	
ft 17'6" x 12'0"	m 5.35 x 3.63
Family	
ft 9'6" x 8'8"	m 2.90 x 2.67
Utility	
ft 7'4" x 5'7"	m 2.25 x 1.71

#### FIRST FLOOR

Principal Bedroom	
ft 13'3" x 11'4"	m 4.04 x 3.46
Ensuite	
ft 8'4" x 4'0"	m 2.54 x 1.21
Bedroom 2	
ft 12'0" x 8'7"	m 3.63 x 2.64
Bedroom 3	
ft 12'0" x 8'7"	m 3.63 x 2.62
Bathroom	
ft 7'9" x 6'6"	m 2.40 x 1.98

### The Linley

#### GROUND FLOOR

Entrance Hall with WC	
Lounge (into bay)	
ft 18'9" x 12'0"	m 5.75 x 3.65
Kitchen   Dining (max)	
ft 19'6" x 12'5"	m 5.92 x 3.78
Family (max)	
ft 9'7" x 9'7"	m 2.92 x 2.91
Utility	
ft 7'1" x 3'3"	m 2.16 x 1.00

#### FIRST FLOOR

Principal Bedroom	
ft 12'4" x 11'11"	m 3.77 x 3.63
Ensuite	
ft 9'5" x 3'11"	m 2.88 x 1.20
Bedroom 2 (max)	
ft 11'11" x 11'7"	m 3.63 x 3.53
Bedroom 3 (max)	
ft 9'3" x 8'3"	m 2.80 x 2.52
Bathroom	
ft 8'11" x 7'1"	m 2.72 x 2.15

**N** = Nilan Unit

**Note:** Selected sites may have a handed or rendered version. Check with our selling agents to confirm the orientation and brick/render make up of specific sites.

CGI shown for illustration purposes only. Floor plans are not to scale